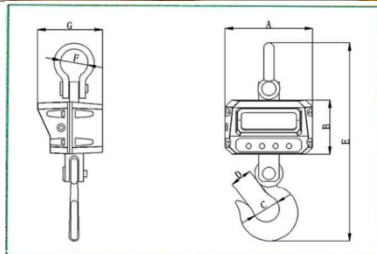
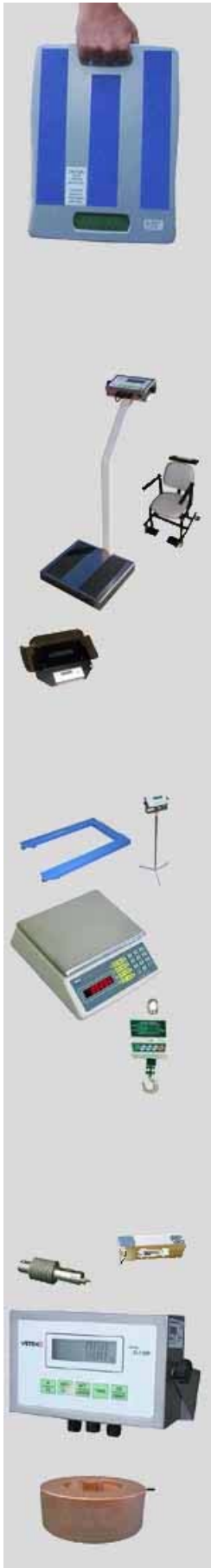


Simple and effective Crane Scale for weighing hanging loads.  
Option:

- Radio frequency repeater AC-01N
- Heat Insulation Board for steel water applications.



Remote Control is standard

**FEATURES**

- Freely Swinging Hook
- CE approved
- 30mm Red LED display
- Gross/Net weight display convertible
- Weight accumulation function
- Auto shut off
- Remote control calibration
- Auto zero tracking, HOLD function
- AC/DC power adaptor:output DC9V/1.5A
- One charging can be last up to 120 hours
- Infrared remote controller, distance: 10m
- Aluminium shell

**SPECIFICATIONS**

Weight accuracy: As OIML III standard.  
Safe overload: 120%F.S.  
Operating temp: - 10°C ~ + 40°C  
Operating humidity: <= 90%R.H.

Model	JLG-600	JLG-1T	JLG-2T	JLG-3T	JLG-5T	JLG-7.5T	JLG-10T
Capacity	0.6t	1t	2t	3t	5t	7.5t	10t
Resolution	0.2/0.1kg.	0.5/0.2kg.	1/0.5kg.	1/0.5kg.	2/1kg	5/2kg.	5/2kg.

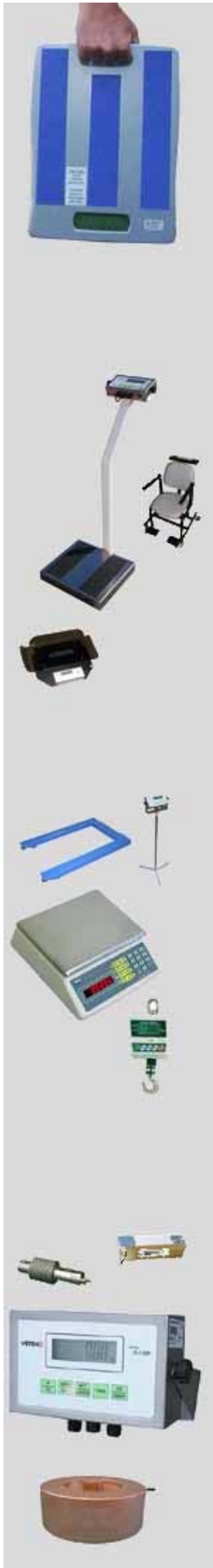
	A	B	C	D	E	F	G
JLG-0.6T	250	165	50	50	575	87	194
JLG-1T	250	165	50	50	575	87	194
JLG-2T	250	165	50	50	575	87	194
JLG-3T	250	165	50	50	575	87	194
JLG-5T	250	165	60	63	615	89	194
JLG-10T	250	165	75	100	740	100	204
JLG-15T	250	165	82	100	940	137	214
JLG-20T	250	165	90	127	940	137	214

**Vetek Weighing AB**

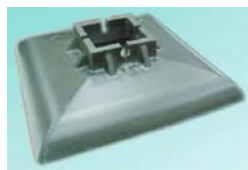
Box 79, Industrivägen 3  
760 40 Vaddo, Sweden  
Datasheet JLG-series Rev01.2008

Tel +46-176 208 920  
Fax +46-176 208 929

www.vetek.com  
e-mail info@vetek.com  
Printed 2008-12-12



AC-01N is a handheld RF Weighing Indicator with RS232 interface, can expand to connect Remote Indicator AC-02N, PC, dot matrix printer and label printer.



Hext Insulation Board

### Minimum safe distance between scale and steel water

Temperature of steel water	Safe distance
1000°C	1200mm
1200°C	1500mm
1400°C	1800mm
1600°C	2000mm

#### Vetek Weighing AB

Box 79, Industrivägen 3  
760 40 Vaddo, Sweden  
Datasheet JLG-series Rev01.2008

Tel +46-176 208 920  
Fax +46-176 208 929

www.vetek.com  
e-mail info@vetek.com  
Printed 2008-12-12